

DataVision

# DVP1

## Compact Profilometer

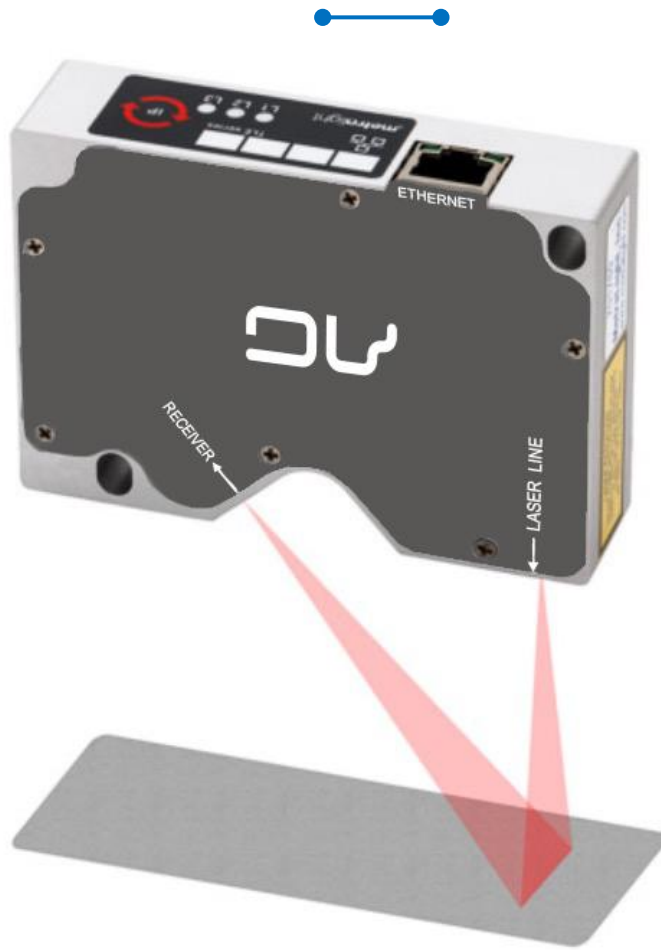


High performance profile sensor  
with Ethernet interface



# DVP1

High performance profile sensor with Ethernet interface



## DESCRIPTION

High performance reflective line triangulation sensor with Ethernet interface is ideal for accurate distance, profile, edge measurement. It is ideal for applications in the Automotive industry, Electronics & Solar Industry, Food & Beverage & Pharmaceutical Industries.

Thanks to high precision and comfortable Ethernet interface it could be used in wide range of applications with easy integration into PLCs.

It is also a right choice for plastic and metal parts inspection - replacement of digital dials.

# DVP1

High performance profile sensor with Ethernet interface



## HIGHLIGHTS

- Compact size
- No external controller
- Measurement Range: 0 to 28mm
- Sub-micron Resolution of 0.4375  $\mu\text{m}$
- Fast 2500 measurements/second
- Ethernet/RS232/Analog/USB output
- Aluminum body



## FEATURES

- Accurate measurement of distance, profile, edge in small compact sensor
- Resolution: 1  $\mu\text{m}$
- 650 nm Class 1M laser device
- Calibrated Data Output
- Ethernet interface (TCP)
- Power over Ethernet (POE), 12V-24V
- Sample PC SW for adjustment

# DVP1

## High performance profile sensor with Ethernet interface



### TECHNICAL SPECIFICATION

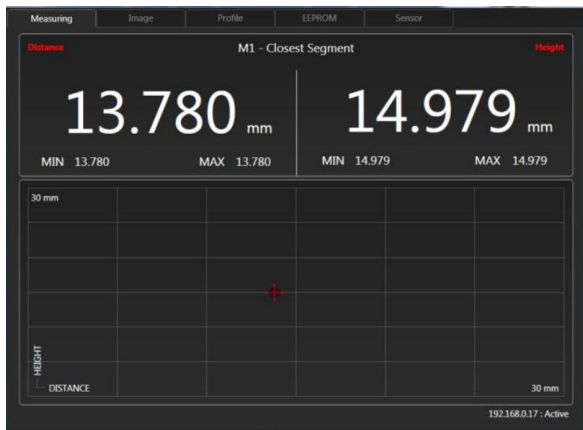
	DVP1-35-65	DVP1-58-122	DVP1-100-300
Distance measurement range	35 to 65 mm	58 to 122 mm	100 to 300 mm
Height measurement range	17 mm at 35 mm distance 24 mm at 65 mm distance	23 mm at 58 mm distance 40 mm at 122 mm distance	30 mm at 100 mm distance 90 mm at 300 mm distance
Line size *	40 $\mu\text{m}$ $\times$ 20.5 mm	60 $\mu\text{m}$ $\times$ 31.5 mm	140 $\mu\text{m}$ $\times$ 60 mm
Detector	CMOS (1280 $\times$ 1024 pixels)		
Distance Resolution	1 $\mu\text{m}$	3 $\mu\text{m}$	6 $\mu\text{m}$
Distance Nonlinearity	10 $\mu\text{m}$	25 $\mu\text{m}$	50 $\mu\text{m}$
Height Resolution	24 $\mu\text{m}$	40 $\mu\text{m}$	80 $\mu\text{m}$
Response Time	33.34 ms for full readout or faster for partial readout		
Interface	RJ45 (Ethernet) – 10/100 Mbit		
Communication	TCP protocol, ICMP (ping)		
Power	POE (Power over Ethernet), from 12 (150mA) to 24 VDC (80mA)		
Weight	105 g		
Dimensions	100 $\times$ 70 $\times$ 25 mm		
Laser	650 nm, Class 1M, P<3mW	650 nm, Class 2M, P<10mW	650 nm, Class 2M, P<10mW

# DVP1

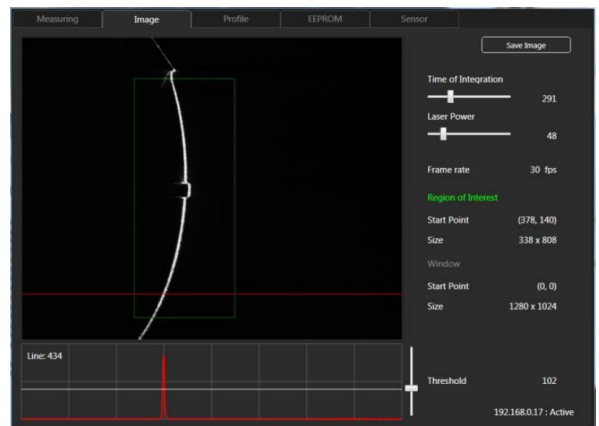
High performance profile sensor with Ethernet interface



SW Studio for sensor settings



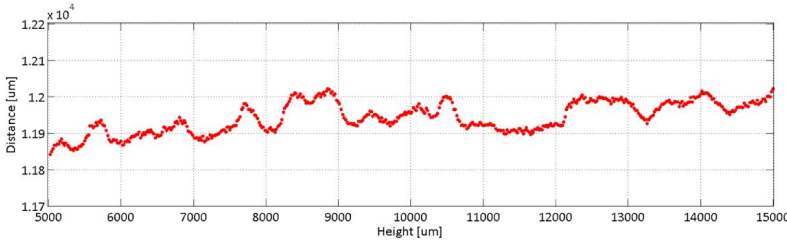
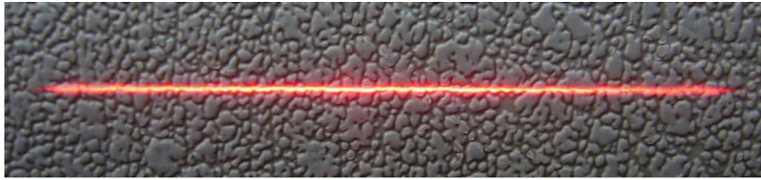
Example 1



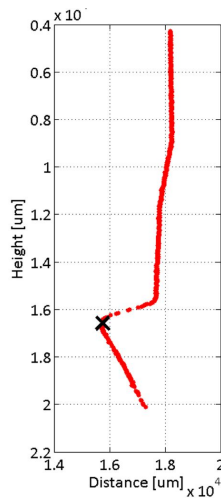
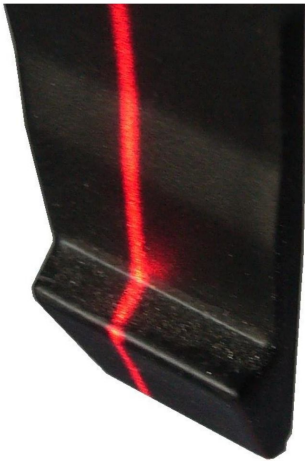
Example 2

# DVP1

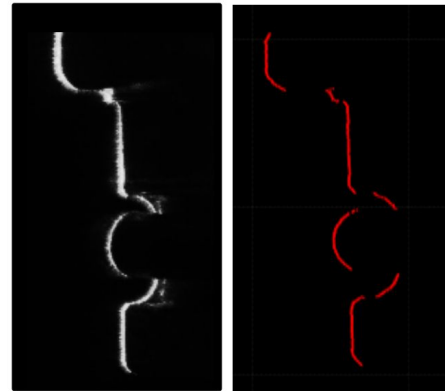
High performance profile sensor with Ethernet interface



Example 1



Example 2



Example 3

# DataVision



5. Května 1746/22, Prague, Czech Republic



info@datavision.software



+420 737 240 516



www.datavision.software